

What to Do During an Accident?



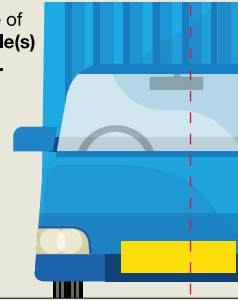
**IN CASE OF ACCIDENT, YOU SHOULD:
AVOID ALL UNAUTHORISED TOW TRUCK OPERATORS OR REPAIR WORKSHOPS.**

1

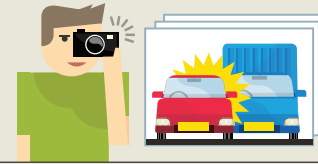
Exchange particulars of involved parties including:

- Name
- NRIC/FIN
- Telephone Number
- Address
- Insurer

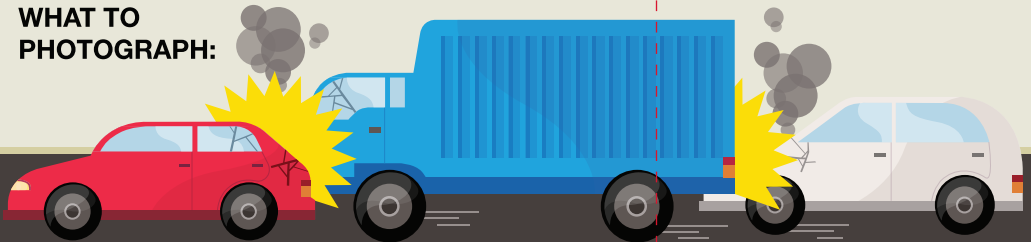
Take note of the **vehicle(s) numbers.**



Take pictures at the accident scene and submit all pictures at your authorised accident reporting centre during your reporting.



WHAT TO PHOTOGRAPH:



SCENE

Take pictures of the accident scene capturing the accident vehicles and surrounding areas.



YOUR VEHICLE

Take pictures of the damages to your vehicle with your licence plate.



OTHER DAMAGED VEHICLE(S)

Take pictures of the damages to all other vehicles involved in the accident with their licence plates. For multiple vehicle collision, take pictures of those with direct contact, e.g. immediate front and immediate rear vehicles.

2

Call your insurer's hotline for a tow truck or for further advice on the accident. If we are your insurer's authorised workshop, or if you are claiming against the other party, call our Assistance Hotline at **6475 9500**.



3

Report and bring your accident vehicle (whether damaged or not) to the approved reporting centre/ authorised workshop within **24 hours** or by the **next working day**.



THE BENEFITS OF REPORTING:

By reporting the accident within the stipulated time, not only will you enjoy hassle-free and quality-certified repair services as provided under the Motor Claims Framework, you will also avoid potentially higher costs from exaggerated claims.

REMEMBER: All accidents must be reported to your insurer within 24 hours or by the next working day with your accident vehicle, no matter how trivial or even if there is no visible damage, and irrespective of whether you are claiming from any insurers or third parties.

SHOULD YOU FAIL TO REPORT THE ACCIDENT:

Should you fail to report to your insurer with your accident vehicle, you may find yourself in a position of having your claims prejudiced or declined later by insurers. Failure to comply with the new policy condition will be seen as being "in breach" of the policy terms and conditions, i.e. there will be no liability on the part of the insurer. Any non-compliance of this policy condition will result in a loss of your No Claims Discount upon renewal of your policy.

DOCUMENTS TO BRING FOR INSURANCE CLAIM:

- Company stamp (for company registered vehicle)
- Identity card
- Insurance certificate/ cover note
- Police report (if applicable)
- Sales agreement
- Valid driving licence



WE DRIVE FIRST CLASS

Cycle & Carriage Body & Paint Centre

209 Pandan Gardens S(609339)

Tel: 6568 4501

Fax: 6565 1240

Operating Hours:

Monday - Friday: 8.30am to 7.00pm

Saturday: 8.30am to 1.00pm

Sunday & Public Holiday: Closed

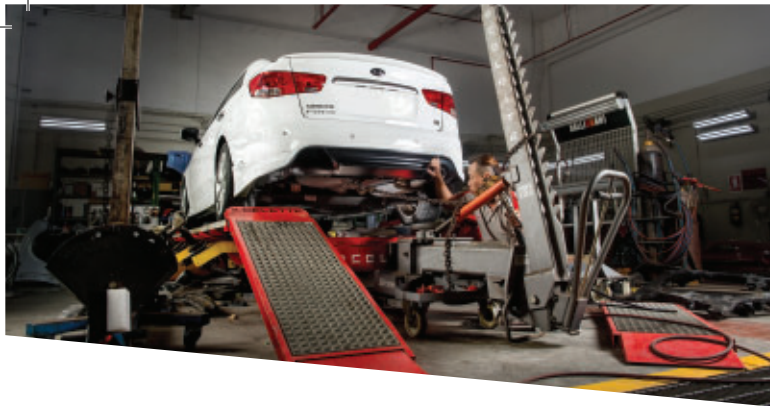
CYCLE & CARRIAGE BODY & PAINT CENTRE



Printed in November 2014



WE DRIVE FIRST CLASS



About Body & Paint Centre

The Cycle & Carriage Body & Paint Centre, located at Pandan Gardens, is a full-fledged workshop that specialises in body and paintwork repairs. It is also the appointed authorised workshop for some of our top motor insurers. Our skilled technicians are trained to ensure that the works are carried out in accordance to the stringent quality standards set by the Manufacturers. Their extensive training and experience, together with the use of the latest technology, will ensure your vehicle will be restored to its immaculate pre-accident condition.

Our Specialised Services

We specialise in the following jobs:

- Panel beating/welding
- Body alignment using the latest technology
- Repair/re-spray body paintwork using environmentally friendly paint booth

The latest technology that we use ensures the most accurate way to repair structural damage on unibody vehicles. We replicate the factory-build method with fixtures and all dimensions of the vehicles are geometrically input for the best results. Together with the NAJA measuring system, we also input the data based on the Manufacturers' blueprints.

In addition to the above, we also offer other services to maintain your car inside and out and make it look brand new again:

- Car grooming including Express (wash & wax), Standard (machine polish) and Luxury (machine polish and leather treatment)
- Total car exterior re-spray
- Spot re-spray
- Rim repair/re-spray
- Paintless Dent Removal (PDR)

Total Car Exterior Re-spray Package

Total car exterior re-spray package using premium quality paint from Spies Hecker will include:

- Repairs on paint scratches, minor dings & dimple dents
- Leather seats conditioning and interior vacuum
- Detailing of trimmings and dashboard
- Antibacterial cabin refresh package

Car Size	Car Models	Same Colour (exterior only)	Colour Change
Compact	MITSUBISHI Attrage, Colt, Colt Plus, iCar, Lancer GLX	\$1,750	\$2,520
	KIA Picanto, Rio		
	CITROËN C1, C3, DS3		
Intermediate	MITSUBISHI ASX, Lancer EX	\$2,150	\$2,920
	KIA Cerato Forte, Forte K3, Koup, Optima K5, Soul		
	CITROËN C4, C4 Coupe, C5, DS4, DS5		
Large	MITSUBISHI Grandis, Outlander, Pajero	\$2,550	\$3,320
	KIA Carens, Carnival, Sorento, Sportage		
	CITROËN C4 Picasso, Grand C4 Picasso, C6		

- Prices inclusive of 7% GST
- 24-month warranty coverage for defective materials or workmanship includes colour fading, blistering, cracking, paint lifting and orange peel
- Items not covered include spotting by acidic rain or damage by foreign object, scratches, dents, stone chips, penetrating stain by bird dropping, tree saps and chemical dropouts
- Cycle & Carriage shall not be liable for any claim for refund, loss of usage, consequential loss, damages, or any other inconvenience. Liability is limited to repairing the defect free of charge

Body & Paint Light Repair & Paintwork

Car Size	Car Models	Front/Rear Bumper, Front/Rear Fender, Door, Bonnet, Trunk Lid (per panel)	Roof Panel	Minor Dent Repair (coin size)
Compact	MITSUBISHI Attrage, Colt, Colt Plus, iCar, Lancer GLX	\$214.00	\$299.60	
	KIA Picanto, Rio			
	CITROËN C1, C3, DS3	\$235.40	\$321.70	
	Intermediate	MITSUBISHI ASX, Lancer EX	\$235.40	\$321.00
KIA Cerato Forte, Forte K3, Koup, Optima K5, Soul				
	CITROËN C4, C4 Coupe, C5, DS4, DS5	\$278.20	\$374.50	
	Large	MITSUBISHI Grandis, Outlander, Pajero	\$267.50	\$347.50
		KIA Carens, Carnival, Sorento, Sportage		
		CITROËN C4 Picasso, Grand C4 Picasso, C6	\$321.00	\$406.60

- Prices inclusive of 7% GST
- Paintwork package prices include minor paintwork scratch repair
- Additional charges applicable for Special or Pearl effect paint. Require assessment to quote
- 10% discount for paint package prices for 2nd panel onwards
- Lead time for light repair/paintwork is 2 working days
- 12-month warranty for work quality (limited to rectification of job only)

Paintless Dent Removal (PDR)

Paintless Dent Removal (PDR) is a cosmetic service to repair dents which did not affect the paintwork. This process is done by applying just the right amount of pressure until the metal is restored close to its original condition without having to repaint your vehicle. This service is available from \$65 (inclusive of GST) and you can consult our Service Advisor at the Body & Paint Centre for more information.

The right parts,
the right equipment,
the right people.
Enjoy complete assurance with genuine parts.

Quality

Every genuine part has been designed to the exact specifications for each particular vehicle. Quality control ensures that your vehicle stays reliable from day one.

Safety

Repairing your vehicle using parts originally designed for it helps maintain manufacturer-specified safety benefits.

Precise Fit

Genuine parts are engineered and manufactured to stringent brand standards for a precise fit.

Genuine Materials

Genuine body and structural replacement parts are made from high-strength steel, aluminium or quality composite materials. Sheet metal parts receive specific treatment to resist corrosion.

Investment Protection

Imitation parts can compromise your vehicle, while genuine parts ensure excellent craftsmanship, performance and precision to exacting standards.

